



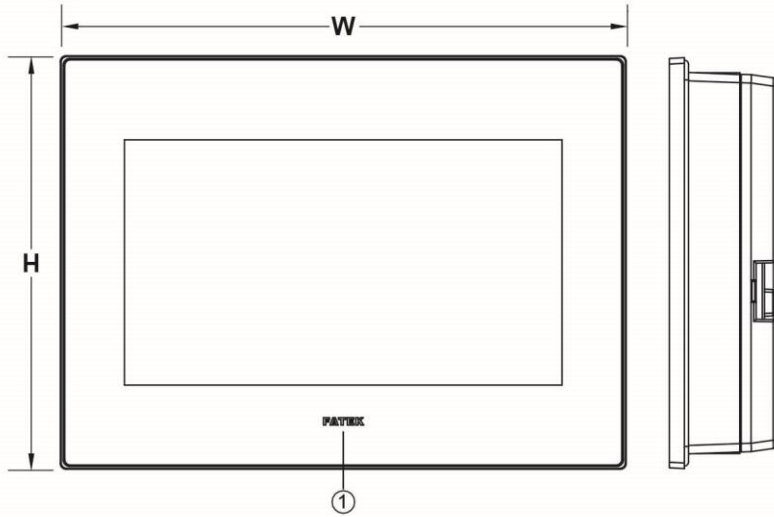
# P2070SK

HMI with 7" TFT LCD display

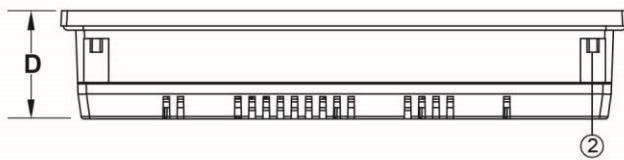
- ✧ Cortex 600 MHz Processor
- ✧ Built-in PLC Expansion function
- ✧ Wide Power Input Range
- ✧ PCB coating for Stability in Harsh Environment
- ✧ Fan-less Design for Cooling Method
- ✧ High Noise Immunity Design for Industrial Application

<b>Display</b>	Panel Size	7" TFT (16:9)	<b>I/O Port</b>	Serial 1 (DB-9)	RS-232 (2W) RS-422/485 (4W)
	Panel Resolution	800 X 480		Serial 2 (Terminal Blocks)	-
	Brightness	200 (cd/m <sup>2</sup> )		RS-422/485 Isolation	-
	Contrast Ratio	500		Ethernet	-
	Backlight Type	LED		USB HOST	USB2.0 * 1
	Backlight Life Time	20,000 Hrs.		USB Device	USB2.0 * 1(Mini-USB)
	Colors	16.7M		Micro-SD Slot	-
	LCD Viewing Angle	50/70/70/70 (T/B/L/R)		Audio Output	-
<b>Touch</b>	Type	4-wire Resistive Type	<b>I/O Extension</b>	Video Input	-
	Accuracy	X axis±2%; Y axis±2%		Termination Switch	-
<b>Memory</b>	Flash	128M	<b>Dimension / Weight</b>	PLC Extension	Yes
	RAM	128M		Dimensions W x H x D	201.0*147.0*38.1 (mm)
<b>System</b>	CPU	32 bit RISC Cortex 600MHz		Cut-out	191.5*137.5 (mm)
<b>Power</b>	Power Input Range	10.5 ~ 28VDC	<b>RTC</b>	Weight	550 (g)
	Isolation Resistance	Exceed 50MΩ at 500VDC		Yes	
	Power Consumption	7.0W (@24VDC)	<b>Software</b>	FvDesigner V1.5.21 or later versions	
<b>Environment</b>	Protection Structure	Front panel : IP65 / Rear Case : IP20			
	PCB Coating	Yes			
	Operating Temp	0~50°C			
	Storage Temp	-20 ~ 60°C			
	Relative Humidity	10%~90% (40°C Non-condensing)			
	Withstand Voltage	500VAC/20mA/1 Min. (between charger & FG terminals)			
	Vibration Endurance	5 to 9Hz Half-amplitude: 3.5mm ; 9 to 150 Hz Constant acceleration: 19.6m/s <sup>2</sup> (2G) ; 3 directions of X, Y, Z: 10times (IEC61131-2 complaints)			
<b>Certification</b>	CE				

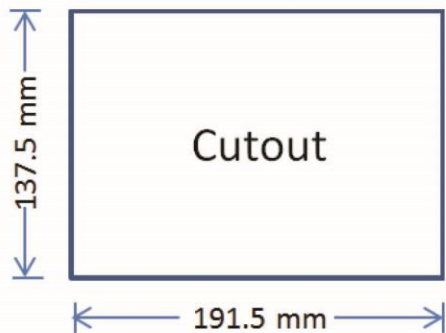
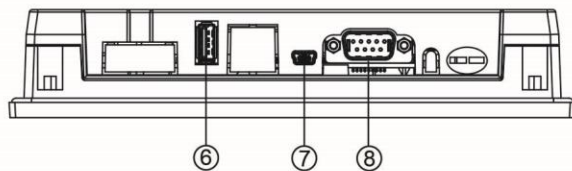
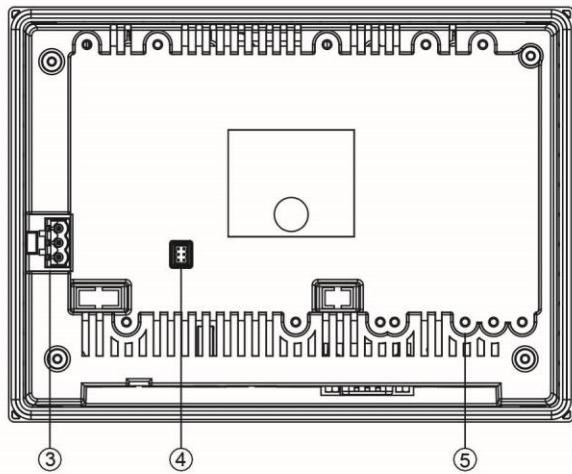
◆ **Dimensions Drawing – P2070SK**



W	201.0 mm
H	147.0 mm
D	38.1 mm



①	Power Indicator Light
②	Mounting Hole
③	Power Connector
④	HB1 PLC Connector
⑤	HB1 PLC Screw Hole
⑥	USB Connector
⑦	Mini USB Connector
⑧	COM1/COM2 DB-9 Male Connector



DB-9 Male Connector			
PIN#	COM1 [RS-232]	COM2 [RS-422]	COM2 [RS-485]
1	NC <sup>*1</sup>	TX+	DATA+
2	RX	NC	NC
3	TX	NC	NC
4	NC	RX+	NC
5	GND	GND	GND
6	NC	TX-	DATA-
7	RTS	NC	NC
8	CTS	NC	NC
9	NC	RX-	NC

\*1 NC: No Connection